

Organisational structure chart

Clinical Divisions

April 2025



Trust Board



**Joint Chair of
NBT & UHBW**
Ingrid Barker



**Joint Chief Executive of
NBT & UHBW**
Maria Kane

Executive Directors



**Hospital Managing
Director**
Glyn Howells



**Chief Operating
Officer**
Nick Smith



**Chief Medical
Officer**
Tim Whittlestone



**Chief Nursing
Officer**
Steve Hams



**Chief Finance
Officer**
Elizabeth Poskitt



**Chief People
Officer**
Peter Mitchell



**Joint Chief Digital
Information Officer,
NBT and UHBW**
Neil Darvill

Non-Executive Directors



Kelvin Blake



Kelly Macfarlane



Richard Gaunt



Sarah Purdy



Jane Khawaja



Shawn Smith



**Director of Corporate
Governance & Trust
Secretary**
Xavier Bell

5 Clinical Divisions

**Anaesthesia,
Surgery,
Critical Care
and Renal
(ASCR)**



Clinical Director
Andrew Smith

**Core Clinical
Services**



Clinical Director
Albert Power

Medicine



Clinical Directors
Ella Chaudhuri & Jarrod Richards

**Neurological &
Musculoskeletal
Sciences
(NMSK)**



Clinical Director
Harsha Gunawardena

**Women &
Children's
Health**



Clinical Director
Jane Mears

Anaesthesia, Surgery, Critical Care and Renal (ASCR)

ASCR management team



Clinical Director
Andrew Smith



Divisional Operations Director
Harriet Livesey



Divisional Director of Nursing
Shelley Thomas

Deputy Divisional Operations Director
Kirsty Pinner

Deputy Divisional Directors of Nursing
Matthew Crabtree & Kelly Bullock

ASCR corporate support



Interim Finance Partner
Pawel Abramik



People Partner
Katie Cooke

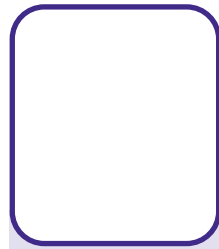


BI Analyst
Catherine Ridley

Specialties	Critical Care	General Surgery	Vascular Network	Breast Services	Plastic, Burns & Dermatology	Urology	Anaesthesia inc. Pre-operative Assessment	Renal & Transplantation	Elective Care / Theatres	Emergency Care	NHS@home
Specialty Lead	Chris Newell	UGI – Chris Wong Colorectal – Anne Pullyblank	Devan Thavarajan	Michelle Mullan	Plastic Surgery - George Wheble Burns – Chris Wearn Dermatology – Helen Audrain	Kate Warren	Clinton Lobo	Renal - James Bushnell/ Jack Galliford Transplant - Sam Turner	Philippa Jackson	Christopher Thompson	Rebecca Winterborn
General Managers	Jay Parry	Josh Pitt		Jay Parry Gemma Quick	Joanne Smart	John Kirby	James Taylor	Liam Hancock	James Taylor	Josh Pitt	Kirsty Pinner
Lead Nurse / Matron	Valentin Crook-Jones	Rosie Malins	Siny Thankachan		Nicola Mackey	Vacant	Dawn Hird	Lisa Ford	Dawn Hird/ Damien Crosswell	Lucinda Saunders	

Core Clinical Services

Core Clinical Services management team



Clinical Director
Vacant



Divisional Operations Director
Sarah Robinson

Deputy Divisional Operations Director
Nickola Gipp



Divisional Director of Nursing / Head of Professions
Liz Varian-Peacock

Core Clinical Services corporate support



Finance Partner
Claire Mitchell



People Partner
Karen Cooke



BI Analyst
Mary Wright

Specialties	Imaging	Pathology	Pharmacy	Endoscopy	Therapies	Centralised Outpatient Services	Clinical Equipment Services
Clinical Specialty Leads	Vacant	Dr Isabel Baker		Dr Ana Terlevich			
Specialty Management Team	Imaging Services Manager: Fiona Rooke Deputy Imaging Services Manager: Sean Fry MRI Modality Lead: Elizabeth Cullimore CT Modality Lead: James Bonner Ultrasound Modality Lead: Patricia Ahmed Plain Film Modality Lead: Paul Hocking Interventional Radiology/Fluoroscopy Modality Lead: Rebecca Warren Nuclear Medicine Modality Lead: Raquel Menezes Imaging Quality Manager Penny Parcell Head of Medical Photography & Illustration: Dawn White	Director of Pathology Sciences: Nina Stock Blood Sciences Lead: Allison Brixey Blood Sciences Operations Manager: Joanne Skingley Head of Bristol Genetics Laboratory: Maggie Williams Bristol Genetics Laboratory Operations Manager: Elaine Watson Cellular Pathology Laboratory Manager: Saima Rasib Neuropathology Laboratory Manager Deepthi Chanday Cellular Pathology / Neuropathology Operations Manager: Mark Orrell Infection Sciences Laboratory Manager: Katy Lomas	Director of Pharmacy: Matthew Kaye Deputy Director of Pharmacy: Alison Staples Associate Director - Clinical Services: Vacant Associate Director - Medicines Governance: Colm McKenzie Associate Director of Pharmacy - Operations: Deborah Brenton Regional Quality Control Laboratory Lead Pharmacist: Oonagh Farr Regional Quality Control Laboratory Manager: Chris Marks	Endoscopy Services Manager: Fiona Rooke Deputy Endoscopy Services Manager: Sean Fry Performance and Operations Manager, Matthew Darvill	Therapies Quality Manager: Steve Bunce Physiotherapy Lead: Kathryn Binns Speech & Language Therapy Lead: Catherine Hamilton Nutrition & Dietetics Lead: Katherine Barker Occupational Therapy Lead: Anne Barraud	General Manager: Lorraine Lewis Assistant General Manager: Nicky Upton Performance and Operations Manager Sarah Walters	Head of Clinical Equipment Services: Agraja Dimunge Quality & Community Manager Emma Broom MDSO / Anaesthetics Paul Derman Electronics & Library Gareth Lewis Beds & Mattresses Kevin Brooksby Mechanical Craig Wheeler Training Lead Lisa Smith

Medicine

Medicine management team



Clinical Directors
Ella Chaudhuri & Jarrod Richards



**Divisional
Operations Director**
Benjamin Hewlett



**Divisional Director
of Nursing**
Annie Langford

**Deputy Clinical
Director**
David Shipway

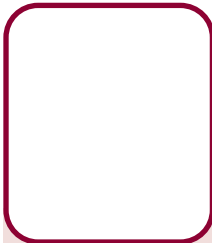
**Deputy Divisional
Operations Director**
Nina Stock

**Deputy Divisional
Directors of Nursing**
Jackie Fear & Rory
Spanton

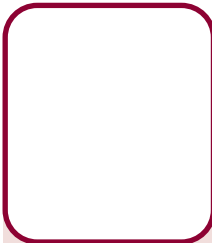
Medicine corporate support



Finance Partner
Jenny Costley



People Partner
James Caldwell



BI Analyst
Vacant

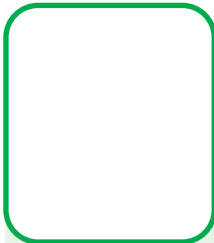
Specialties	Cluster 1					Cluster 2							Cluster 3			Cluster 4	
	Emergency Medicine	Acute Medical Unit	Mental Health Liaison	Clinical Psychology	Hospital at Night	Acute Oncology	Care of the Elderly	Clinical Haematology	Palliative Medicine	Immunology & Allergy	Infectious Diseases	HIV	Diabetes & Endocrinology	Gastroenterology & Hepatology	Medical Day Care	Cardiology	Respiratory
Specialty Lead	Jayne McKinley	Louise Powter	Anish Patel	Charlie Jones	Rina Adhikary	Aless Bartlett	Anna O'Brien	Alastair Whiteway	Anila Brigham	Mark Gompels	Ed Moran	Phil Bright	Fong Chau	Leonard Griffiths		Chih Wong	Peter Creber
Matron	Anna Bell, Shelley Panayiotou, Emily Watts & Lisa Haines					Jet O'Neill, George Duffield							Emma Gilchrist			Bev Davies	
General Manager	Danielle Hannah					Christina Fletcher							Graham Bartlett			Nicola Alfonsi	
Specialty Manager	Zahra Dahnoun & Jade Venning					Anna Bassadone							Paul Cousins	Abi Warren		Natalie Smith	
Support Manger	Mariam Alauddin					Alex Davis				Laura Webb			Kelly Thompson	Courtney Borg		Elliott Main	Alec Gear

Neurological & Musculoskeletal Sciences (NMSK)

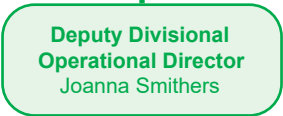
NMSK management team



Clinical Director
Harsha Gunawardena



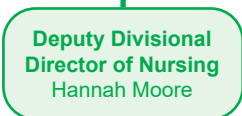
Interim Divisional
Operations Director
Tom Woodward



Deputy Divisional
Operational Director
Joanna Smithers



Divisional Director
of Nursing
Mike Puckey



Deputy Divisional
Director of Nursing
Hannah Moore

NMSK corporate support



Finance Partner
John Sharpe



People Partner
Anthony Dorman



BI Analyst
Sarah Cox

Specialties	Cluster 1			Cluster 2		Cluster 3						Cluster 4		
	Neurosurgery	Spines	Pain	Elective Orthopaedics	Trauma	Acute Neurology	Sub Specialty Neurology	Rheumatology	Neuropsychiatry	Neuropsychology	Neurophysiology	Stroke	Bristol Centre for Enablement	Major Trauma Centre
Specialty Lead	Adam Williams	Mike Katsihimas	Shelley Barnes	Mark Crowther	Andrew Riddick	Justin Pearson	Mark Cossburn	Lynsey Clarke	Anish Patel	Angelita Cruz	Peter Walsh	James Dodd	Shigong Guo	Nirosha De Zoysa
General Manager	Tom Gardener			Millie Collins		Ellicia Sulway						Linda Matthews Jon Porter	David Rowland	N/A
Matron	Debbie Beynon			Natalie Wood		Rachael Crowley						Emerline Albano	N/A	N/A
Ward Manager	Helen Lincoln Rosie Morris	Alex Deas Grace Jones	Rose Marriott	Hiu Ying Harris Helen Jones	Jordan Hignell Elspeth Knight	Tanya Matthews Helen Coxon Maria Arriola	N/A	Lisa Nikitin	N/A	N/A	Tanya Matthews Helen Coxon Maria Arriola	N/A	N/A	N/A

Women & Children's Health

Women & Children's management team



Clinical Director
Jane Mears



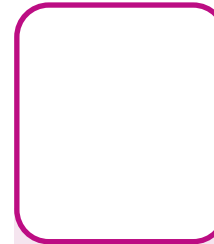
Divisional Operations Director
Claire Weatherall



Divisional Director of Midwifery and Nursing
Julie Northrop

Deputy Divisional Directors of Midwifery and Nursing
Laura Gold

Women & Children's corporate support



Finance Partner
Jess Jones



People Partner
Nicola Marvelley



BI Analyst
Helen Fenn

Specialties	Perinatal	Gynaecology
Specialty Lead	Dr Joanna Crofts Dr Faith Emery	Dr Chendrimada Madhu
Service Manager / GM	Louise Wallace Charlotte Bryan	Lauren Roberts
Lead Nurse / Matron	Central Delivery Suite - Nicola Chinnock Community/Birth Centres - Maggie Smith Antenatal Clinic, Inpatient and Fetal Medicine - Bonny Hetherington Continuous Improvement and Learning Lead – Ruth Gregory and Yasmin Riddall Practice Development Midwife (Maternity) – Stephanie Withers	Vacant
Ward Manager	Percy Phillips Ward - Rachel Cox Quantock Ward and Assessment Unit – Carli Roberts and Lisa Redmayne Mendip Birth Centre – Beth Thornley and Beth Connelly Cossham Birth Centre, Home Birth and Birth Choices – Beth Connelly Antenatal Clinic Manager – Cathy Poole Fetal Medicine – Julie Wormwell and Zoe Dorgan Antenatal Screening – Aimee Yendle NICU - Fiona Buckley Practice Development (NICU) – Claire Johnson	Cotswold Ward – Nix Carey