

# Organisational structure chart

## Clinical Divisions

October 2024



# Trust Board



North Bristol  
NHS Trust



**Joint Chair of  
NBT & UHBW**  
Ingrid Barker



**Joint Chief Executive of  
NBT & UHBW**  
Maria Kane

## Executive Directors



**Hospital Managing  
Director**  
Glyn Howells



**Chief Operating  
Officer and Deputy  
Chief Executive**  
Steve Curry



**Chief Medical  
Officer**  
Tim Whittlestone



**Chief Nursing  
Officer**  
Steve Hams



**Chief Finance  
Officer**  
Elizabeth Poskitt



**Chief People  
Officer**  
Peter Mitchell



**Joint Chief Digital  
Information Officer,  
NBT and UHBW**  
Neil Darvill

## Non-Executive Directors



Kelvin Blake



Kelly Macfarlane



Richard Gaunt



Sarah Purdy



Jane Khawaja



Shawn Smith



**Director of Corporate  
Governance & Trust  
Secretary**  
Xavier Bell

# 5 Clinical Divisions

Anaesthesia,  
Surgery,  
Critical Care  
and Renal  
(ASCR)



**Clinical Director**  
Andrew Smith

Core Clinical  
Services



**Clinical Director**  
Albert Power

Medicine



**Clinical Directors**  
Ella Chaudhuri & Jarrod Richards

Neurological &  
Musculoskeletal  
Sciences  
(NMSK)



**Clinical Director**  
Harsha Gunawardena

Women &  
Children's  
Health



**Clinical Director**  
Jane Mears

# Anaesthesia, Surgery, Critical Care and Renal (ASCR)



North Bristol  
NHS Trust

## ASCR management team



**Clinical Director**  
Andrew Smith



**Divisional Operations Director**  
Harriet Livesey



**Divisional Director of Nursing**  
Shelley Thomas

**Deputy Divisional Operations Director**  
Kane Sullivan

**Deputy Divisional Directors of Nursing**  
Matthew Crabtree & Kelly Bullock

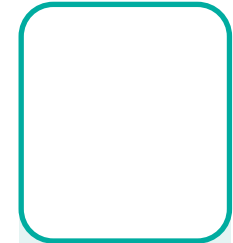
## ASCR corporate support



**Finance Partner**  
Steven Wainwright



**People Partner**  
Katie Cooke



**BI Analyst**  
Mike Smyth

Specialties	Critical Care	General Surgery	Vascular Network	Breast Services	Plastic, Burns & Dermatology	Urology	Anaesthesia inc. Pre-operative Assessment	Renal & Transplantation	Elective Care / Theatres	Emergency Care	NHS@home
<b>Specialty Lead</b>	Chris Newell	UGI – Chris Wong Colorectal – Anne Pullyblank	Devan Thavarajan	Michelle Mullan	Plastic Surgery - Vacant Burns – Ian Mackie Dermatology – Helen Audrain	Kate Warren	Clinton Lobo	Renal - James Bushnell/ Jack Galliford Transplant - Sam Turner	Philippa Jackson	Christopher Thompson	Rebecca Winterborn
<b>General Managers</b>	Anna Mankelow	Josh Pitt		James Taylor	Joanne Smart	Jay Parry	Ryan Doherty	Liam Hancock	Ryan Doherty	Josh Pitt	Kane Sullivan
<b>Lead Nurse / Matron</b>	Valentin Crook-Jones	Natalie Ferris	Siny Thankachan		Nicola Mackey	Natalie Ferris	Dawn Hird	Lisa Ford	Dawn Hird/ Damien Crosswell	Natalie Ferris Lucinda Saunders	
<b>Ward Manager / Theatre Co-ordinator</b>	Rachael Smith Sally Kelly Kate Allchorne Alison Spencer Chris Mills	Lisa Hayward Sarah Crosswell	Silvia Rubino Karen Venton Marcia Dawkins	Caroline Eden Catherine Braybrooke Kareena Francombe	Johanna Thomas Catherine Braybrooke Outpatients Emma Fox	Sarah Crosswell/ Georgina Erdozain	Damien Crosswell Caryl Hughes / James Chesterton	Hayley Smith Prakash Choughule Sheela Shiji	<b>Medirooms</b> Eleanor French Honeylyn Sarao Sophie Fidoe	<b>Ward Manager</b> Lauren Weetch <b>Theatre Co-ordinators</b> Karen Venton Marcia Dawkins	Lucinda Saunders

# Core Clinical Services



North Bristol  
NHS Trust

## Core Clinical Services management team



**Clinical Director**  
Albert Power



**Divisional Director**  
Sarah Robinson

**Deputy Divisional  
Operational Director**  
Nickola Gipp



**Divisional Director of Nursing  
/ Head of Professions**  
Liz Varian-Peacock

## Core Clinical Services corporate support



**Finance Partner**  
Claire Mitchell



**People Partner**  
Trisha Quashie-Boney



**BI Analyst**  
Mary Wright

Specialties	Imaging	Pathology	Pharmacy	Endoscopy	Therapies	Centralised Outpatient Services	Clinical Equipment Services
<b>Clinical Specialty Leads</b>	Dr Anthony Cox Dr Eleanor Ngan Soo	Dr Isabel Baker		Dr Ana Terlevich			
<b>Specialty Managers</b>	<p><b>Head of Imaging Services:</b> Fiona Rooke</p> <p><b>Deputy Head of Imaging Services:</b> Sean Fry</p> <p><b>MRI Modality Lead:</b> Elizabeth Cullimore</p> <p><b>CT Modality Lead:</b> James Bonner</p> <p><b>Ultrasound Modality Lead:</b> Patricia Ahmed</p> <p><b>Plain Film Modality Lead:</b> Paul Hocking</p> <p><b>Interventional Radiology/Fluoroscopy Modality Lead:</b> Rebecca Warren</p> <p><b>Nuclear Medicine Modality Lead:</b> Raquel Menezes</p> <p><b>Head of Medical Photography &amp; Illustration:</b> Dawn White</p>	<p><b>Director of Pathology Sciences:</b> Dave Fisher</p> <p><b>Blood Sciences Manager:</b> Allison Brixey</p> <p><b>Blood Sciences Operations Manager:</b> Joanne Skingley</p> <p><b>Head of Bristol Genetics Laboratory:</b> Maggie Williams</p> <p><b>Bristol Genetics Laboratory Operations Manager:</b> Elaine Watson</p> <p><b>Cellular Pathology Laboratory Manager:</b> Saima Rasib</p> <p><b>Cellular Pathology Operations Manager:</b> Mark Orrell</p> <p><b>Infection Sciences Laboratory Manager:</b> Katy Lomas</p>	<p><b>Director of Pharmacy:</b> Matthew Kaye</p> <p><b>Associate Director - Business Development:</b> Maggie Pugh</p> <p><b>Associate Director - Clinical Services:</b> Alison Staples</p> <p><b>Associate Director - Medicines Governance:</b> Colm McKenzie</p> <p><b>Pharmacy Operations Manager:</b> Deborah Brenton</p> <p><b>Regional Quality Control Laboratory Lead Pharmacist:</b> Oonagh Farr</p> <p><b>Regional Quality Control Laboratory Manager:</b> Chris Marks</p>	<p><b>Head of Endoscopy Services:</b> Fiona Rooke</p> <p><b>Deputy Head of Endoscopy Services:</b> Sean Fry</p> <p><b>General Manager:</b> John Kirby</p>	<p><b>Clinical Head of Therapies:</b> Steve Bunce</p> <p><b>Physiotherapy Lead:</b> Kathryn Binns</p> <p><b>Speech &amp; Language Therapy Lead:</b> Catherine Hamilton</p> <p><b>Nutrition &amp; Dietetics Lead:</b> Katherine Barker</p> <p><b>Occupational Therapy Lead:</b> Anne Barraud</p>	<p><b>General Manager:</b> Lorraine Lewis</p> <p><b>Assistant General Manager:</b> Nicky Upton</p>	<p><b>Head of Clinical Equipment Services:</b> Agraja Dimunge</p> <p><b>Quality &amp; Community Manager</b> Emma Broom</p> <p><b>MDSO / Anaesthetics</b> Paul Derman</p> <p><b>Electronics &amp; Library</b> Gareth Lewis</p> <p><b>Beds &amp; Mattresses</b> Kevin Brooksby</p> <p><b>Mechanical</b> Vacant</p> <p><b>Training Lead</b> Lisa Smith</p>

## Medicine management team



**Clinical Directors**  
Ella Chaudhuri & Jarrod Richards



**Divisional Operational Director**  
Benjamin Hewlett



**Divisional Director of Nursing**  
Annie Langford

**Deputy Clinical Director**  
David Shipway

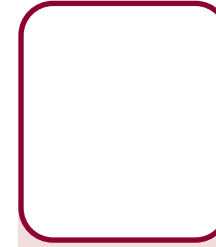
**Deputy Divisional Operational Directors**  
Nina Stock

**Deputy Divisional Directors of Nursing**  
Jackie Fearr & Rory Spanton

## Medicine corporate support



**Finance Partner**  
Jenny Costley



**People Partner**  
James Caldwell



**BI Analyst**  
Catherine Ridley

Specialties	Cluster 1					Cluster 2						Cluster 3			Cluster 4		
	Emergency Medicine	Acute Medical Unit	Mental Health Liaison	Clinical Psychology	Hospital at Night	Acute Oncology	Care of the Elderly	Clinical Haematology	Palliative Medicine	Immunology & Allergy	Infectious Diseases	HIV	Diabetes & Endocrinology	Gastroenterology & Hepatology	Medical Day Care	Cardiology	Respiratory
Specialty Lead	James Cameron	Louise Powter	Anish Patel	Charlie Jones	Rina Adrikary	Aless Bartlett	Anna O'Brien	Alastair Whiteway	Anita Bringham	Mark Gompels	Ed Moran	Phil Bright	Fong Chau	Leonard Griffiths		Chih Wong	Peter Creber
Matron	Anna Bell, Adele Sage & Lisa Haines					Marianne Carter, Shelley Panayiotou & Jet O'Neill						Emma Gilchrist			Bev Davies		
General Manager	Danielle Hannah					Christina Fletcher						Graham Bartlett			Nicola Alfonsi		
Specialty Manager	Zahra Dahnoun & Jade Venning					Anna Bassadone						Paul Cousins	Abi Warren		Natalie Smith		
Support Manger	Mariam Alauddin					Alex Davis			Laura Webb			Kelly Thompson	Megan Smith		Elliott Main	Alec Gear & Adaam Rajani	

# Neurological & Musculoskeletal Sciences (NMSK)



North Bristol  
NHS Trust

## NMSK management team



**Clinical Director**  
Harsha Gunawardena



**Divisional Operational Director**  
Andy Clark



**Divisional Director of Nursing**  
Mike Puckey

**Deputy Divisional Operational Director**  
Ginny Nash

## NMSK corporate support



**Finance Partner**  
John Sharpe



**People Partner**  
Anthony Dorman



**BI Analyst**  
Sarah Cox

Specialties	Cluster 1			Cluster 2		Cluster 3						Cluster 4			
	Neurosurgery	Spines	Pain	Elective Orthopaedics	Trauma	Acute Neurology	Sub Speciality Neurology	Rheumatology	Neuropsychiatry	Neuropsychology	Neurophysiology	Stroke	Bristol Centre for Enablement	Major Trauma Centre	Neuropathology
Specialty Lead	Adam Williams	Mike Katsihimas	Shelley Barnes	Mark Crowther	Andrew Riddick	Justin Pearson	Mark Cossburn	Lynsey Clarke	Anish Patel	Angelita Cruz	Peter Walsh	James Dodd	Shigong Guo	Nirosha De Zoysa	Kathreena Kurian
General Manager	Tom Gardener			Tom Woodward		Ellicia Sulway						Linda Matthews Joanna Smithers	David Rowland	N/A	Vacant
Matron	Debbie Beynon			Natalie Wood		Morwenna Maddock Yvonne Iles			Rachael Crowley			Emerline Albano	N/A	N/A	N/A
Ward Manager	Helen Lincoln Rosie Morris	Alex Deas Grace Jones	Rose Marriott	Helen Jones	Jordan Hignell Elspeth Knight	Mary Ilagan		N/A	Lisa Nikitin	N/A	N/A	Tanya Matthews	N/A	N/A	N/A

# Women & Children's Health



North Bristol  
NHS Trust

## Women & Children's management team



**Clinical Director**  
Jane Mears



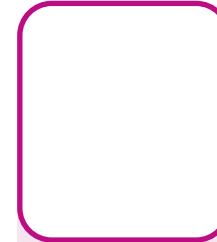
**Divisional  
Operational Director**  
Claire Weatherall



**Divisional Director of  
Midwifery and Nursing**  
Julie Northrop

**Deputy Divisional Directors of  
Midwifery and Nursing**  
Jodie DeRosa & Di Dorrington

## Women & Children's corporate support



**Finance Partner**  
Jess Jones



**People Partner**  
Nicola Marvelley



**BI Analyst**  
Helen Fenn

Specialties	Maternity	NICU	Gynaecology
<b>Specialty Lead</b>	Dr Joanna Crofts	Dr Faith Emery	Dr Chendrimada Madhu
<b>Service Manager / AGM</b>	Louise Wallace		Kirsty Pinner
<b>Lead Nurse / Matron</b>	Central Delivery Suite - Nicola Chinnock Community/Birth Centres - Maggie Smith Divisional Recruitment and Retention Lead - Liz Haines Antenatal Clinic, Inpatient and Fetal Medicine - Bonny Hetherington Lead Sonographers – Sara Shahin and Jade Knowlden Continuous Improvement and Learning Lead – Ruth Gregory Practice Development Midwife (Maternity) – Stephanie Withers	Amy Purnell	Rosie Malins
<b>Ward Manager</b>	Percy Phillips Ward - Rachel Cox Quantock Ward and Assessment Unit – Carli Bleaken and Lisa Redmayne Mendip Birth Centre – Beth Thornley and Beth Connelly Cossham Birth Centre – Beth Connelly and Joanna Karolewska Antenatal Clinic Manager – Cathy Poole Fetal Medicine – Julie Wormwell and Zoe Dorgan Antenatal Screening – Aimee Yendle	Fiona Buckley Practice Development (NICU) – Claire Johnson	Cotswold Ward – Nix Carey